

VOLTAGE SIGNAL OUTPUT CURRENT TRANSFORMERS

Model CV126 Ratio to 1 (Window Size: 8.25" Dia.)

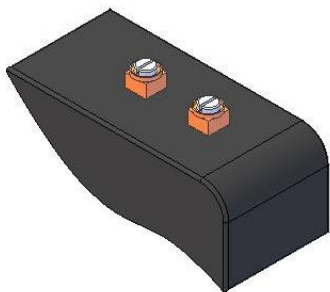
Catalog Number	Primary Current/ Sec. Voltage	Accuracy at 60Hz	TRF @ 30C	TRF @55C
CV126**-401-1	400A:1V	0.3%	1.0	0.8
CV126**-501-1	500A:1V	0.3%	1.0	0.8
CV126**-601-1	600A:1V	0.3%	1.0	0.8
CV126**-751-1	750A:1V	0.3%	1.0	0.8
CV126**-801-1	800A:1V	0.3%	1.0	0.8
CV126**-102-1	1000A:1V	0.3%	1.0	0.8
CV126**-122-1	1200A:1V	0.3%	1.0	0.8
CV126**-202-1	2000A:1V	0.3%	1.0	0.8
CV126**-252-1	2500A:1V	0.3%	1.0	0.8
CV126**-302-1	3000A:1V	0.3%	1.0	0.8

ORDERING NOTE*: When ordering, use the prefix below to indicate unit designation/configuration. (i.e. CV126SHT-501-1)

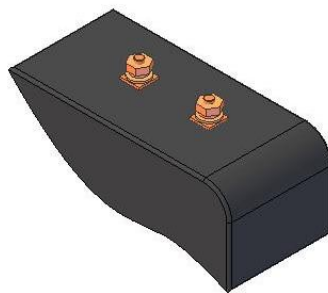
SH-* = Square Case with mounting holes

T = Male (Brass studs No. 8-32 UNC with one flat washer, one lock washer and one nut each.)

Y = Female (Brass with one Cup washer, one lock washer and one No. 8-32 UNC binding head screw each.)



Y = Female Terminals



T = Male Terminals