



CURRENT TRANSFORMERS

Model 5 (Window Size: 1.56" Diameters)

Application: Used with ammeters, watt meters and cross current compensation.

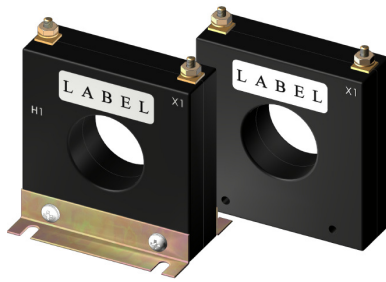
Frequency: 50-400 Hz

Insulation Level: 600 Volts, 10Kv BIL Full Wave

- Flexible leads available for all case configurations. Flexible leads are UL 1015 105°C, C.S.A approved #16 AWG, 24" long standard length. Non-standard lengths are available upon request.
- Terminals are brass studs No. 8-32 UNC with one flat washer, one lock washer and one nut each. Terminals are only available on the square case configuration.
- Mounting brackets kits for the Model 5SHT or 5SHL are available when required.
- Approximate weight: 0.5 lbs.



5 SFT



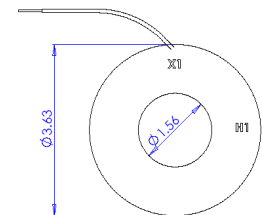
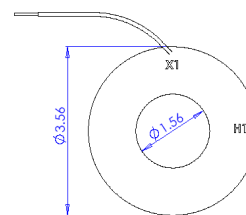
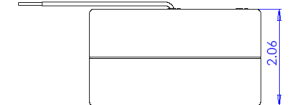
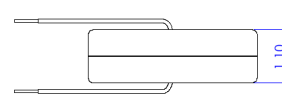
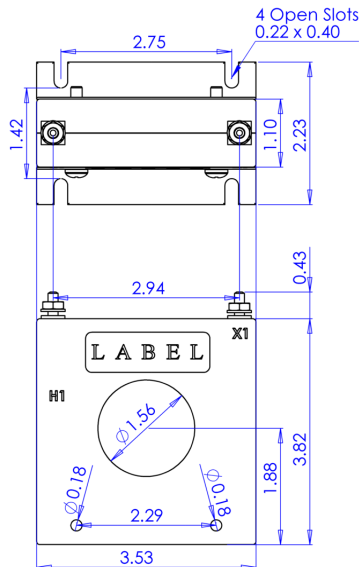
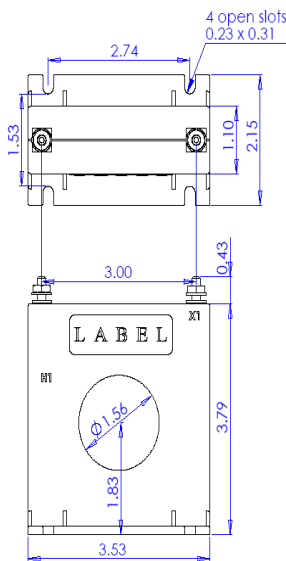
5 SHT



5 RL



5 DRL



*Note-Mounting brackets for the 5SHT and 5SHL are sold separately (Part Number 1121A00020-1)



CURRENT TRANSFORMERS

Model 5 (Window Size: 1.56" Diameters)

Catalog Number	Current Ratio	Models 5SFT, 5SHT, 5RL		Models 5DRL	
		Accuracy at 60 Hz	Burden VA at 60Hz	Accuracy at 60 Hz	Burden VA at 60Hz
5**-500	50:5	± 2%	1.0	± 2%	2.5
5**-600	60:5	± 2%	1.5	± 1%	2.5
5**-750	75:5	± 2%	1.5	± 1%	3.5
5**-101	100:5	± 1%	2.0	± 1%	5.0
5**-151	150:5	± 1%	5.0	± 1%	10.0
5**-201	200:5	± 1%	5.0	± 1%	12.5
5**-251	250:5	± 1%	10.0	± 1%	20.0
5**-301	300:5	± 1%	12.5	± 1%	25.0
5**-401	400:5	± 1%	12.5	± 1%	40.0
5**-501	500:5	± 1%	20.0	± 1%	50.0
5**-601	600:5	± 1%	25.0	± 1%	60.0
5**-751	750:5	± 1%	25.0	± 1%	60.0
5**-801	800:5	± 1%	25.0	± 1%	60.0
5**-102	1000:5	± 1%	25.0	± 1%	75.0
5**-122	1200:5	± 1%	30.0	± 1%	90.0

**Note: When ordering, use prefix below to indicate unit designation/configuration.
(i.e. 5SFT-101)

SFT= Square Case w/molded feet and terminals

SFL= Square Case w/molded feet and 24" leads

*SHT= Square Case w/o molded feet and terminals

*SHL= Square Case w/o molded feet and 24" leads

RL= Thin Round Case and 24" leads

DRL= Thick Round Case and 24" leads

*Note-Mounting Brackets for the 5SHT and 5SHL Part Number 1121A00020-1