



CURRENT TRANSFORMERS

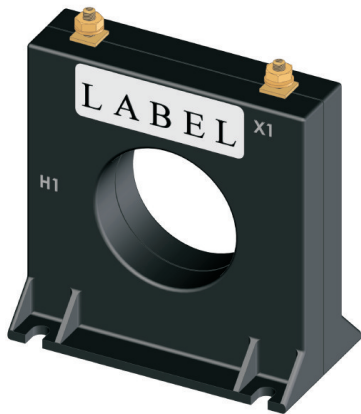
Model 6 (Window Size: 2.06" Diameters)

Application: Used with ammeters, wattmeters and cross current compensation.

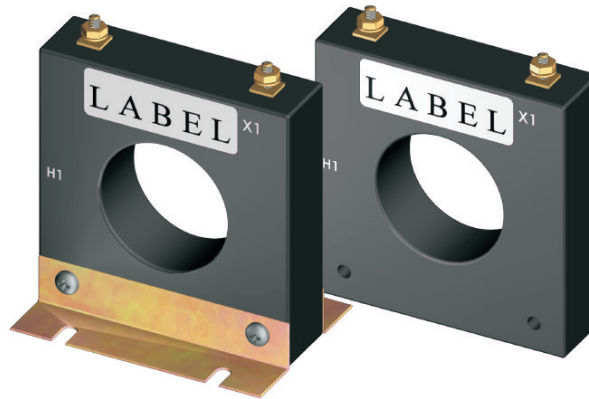
Frequency: 50 -400Hz

Insulation Level: 600 Volts, 10kv BIL Full Wave

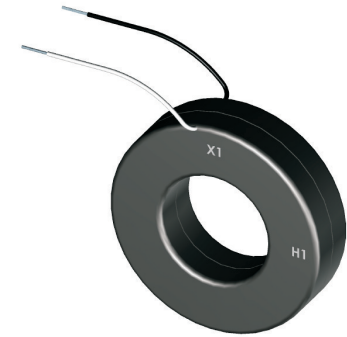
- Flexible leads available for all case configurations. Flexible leads are UL 1015 105°C, C.S.A. approved #16 AWG, 24" long standard length. Non-standard lengths are available upon request.
- Terminals are brass studs No. 8-32 UNC with one flat washer, one lock washer and one nut each. Terminals are only available on the square case configuration.
- Mounting brackets kits for the Model 6SHT or 6SHL are available when required.
- Approximate weight: 1.2 lbs.



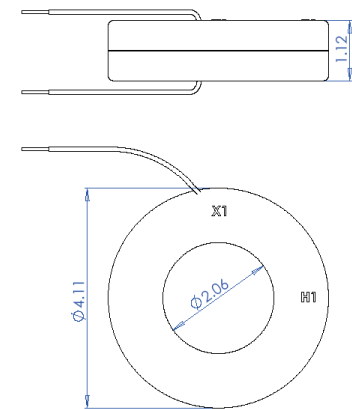
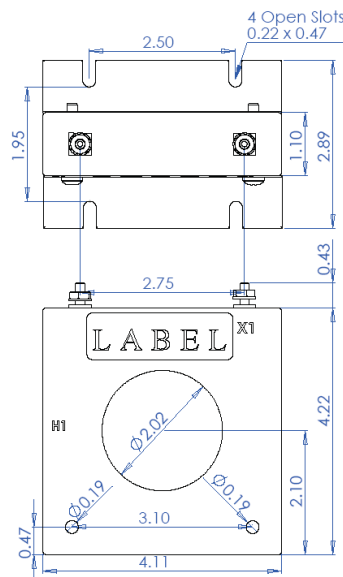
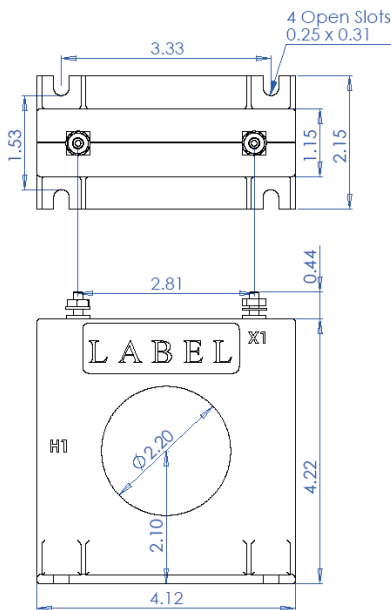
6 SFT



6 SHT



6 RL



*Note - Mounting brackets for the 6SHT and 6SHL are sold separately (Part Number 1121A00025-1)



CURRENT TRANSFORMERS

Model 6 (Window Size: 2.06" Diameters)

Catalog Number	Current Ratio	Models 6SFT, 6SHT, 6RL	
		Accuracy at 60 Hz	Burden VA at 60 Hz
6 **—101	100:5	± 2%	2.0
6 **—151	150:5	± 1%	5.0
6 **—201	200:5	± 1%	5.0
6 **—251	250:5	± 1%	7.5
6 **—301	300:5	± 1%	12.5
6**—401	400:5	± 1%	15.0
6**—501	500:5	± 1%	25.0
6**—601	600:5	± 1%	30.0
6**—751	750:5	± 1%	25.0
6**—801	800:5	± 1%	25.0
6**—102	1000:5	± 1%	35.0
6**—122	1200:5	± 1%	40.0
6**—152	1500:5	± 1%	50.0

**Note: When ordering, use prefix below to indicate unit designation/configuration.
(i.e. 6SFT-101).

SFT = Square Case w/ molded feet and terminals

SFL = Square Case w/ molded feet and 24" leads

*SHT = Square Case w/o molded feet and terminals

*SHL = Square Case w/o molded feet and 24" leads

RL = Thin Round Case and 24" leads

DRL = Thick Round Case and 24" leads

*Note - Mounting brackets for the 6SHT and 6SHL Part Number 1121A00025-1